



9/45 Leveson Street North Melbourne VIC

2 2 1

Chic and unique, this converted warehouse offers not only comfort and style, but ample living area suited to all lifestyles. Spaced over 3 levels, this stunning townhouse boasts a large main bedroom with BIR, ensuite and a private balcony, second bedroom with BIR, central bathroom with laundry facilities, an open plan living and kitchen ideal for entertaining with another balcony and finished with beautiful polished wooden floorboards. Features include split-system air conditioning, secure car park and secure/intercom entry. Within walking distance to the hustle and bustle of Errol Street, Queen Victoria markets and only a few minutes' drive to hospitals and Melbourne Uni, this location shows the best of Melbourne has to offer.

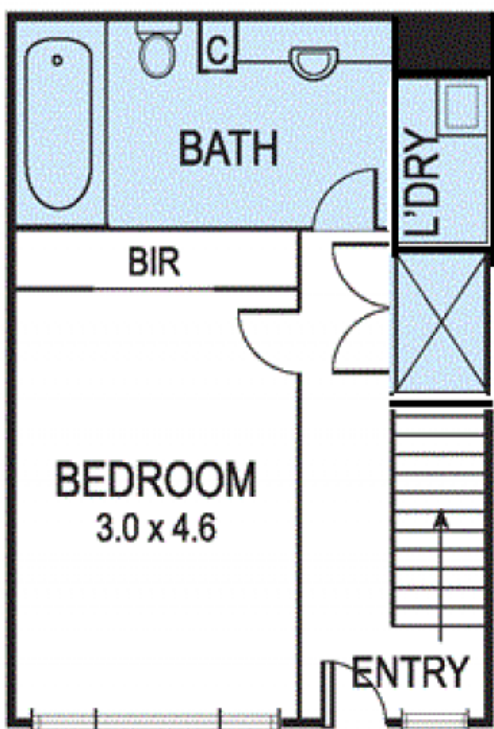
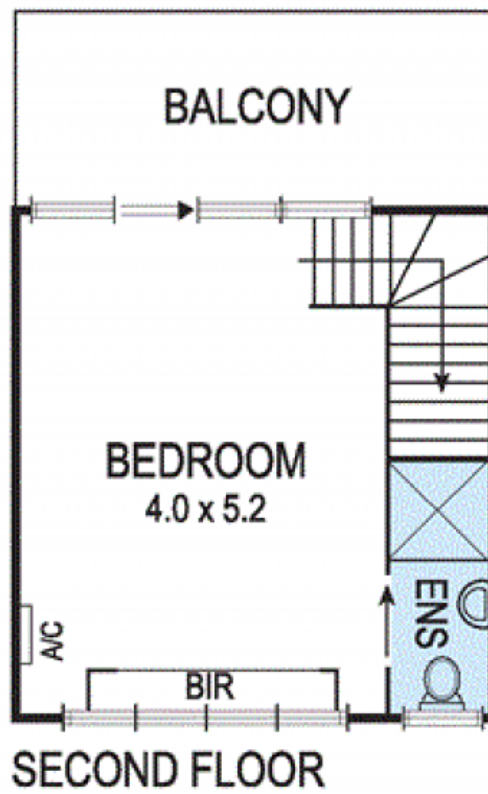
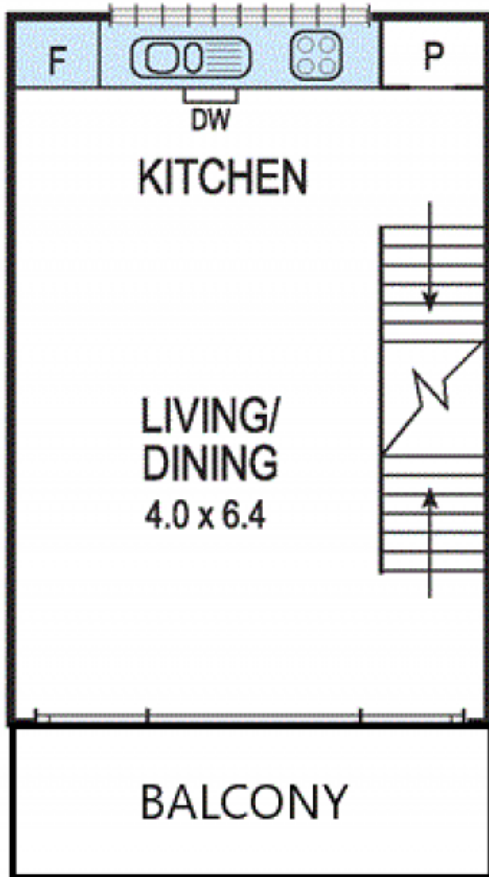
Price : ESP \$825,000-\$875,000
View : <https://www.jmre.com.au/sale/vic/inner-city/north-melbourne/residential/townhouse/7829987>



Jmre A Smartre Agency
03 9328 2002



FIRST FLOOR



GROUND FLOOR

