



**Suite 112/204-218 Dryburgh Street North Melbourne VIC**

Easily accessible, close to the CBD and upcoming "Arden Gardens Precinct"

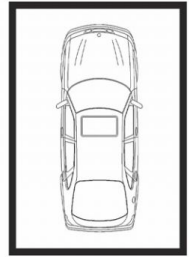
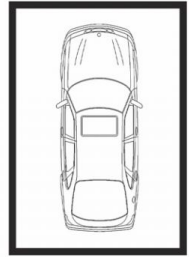
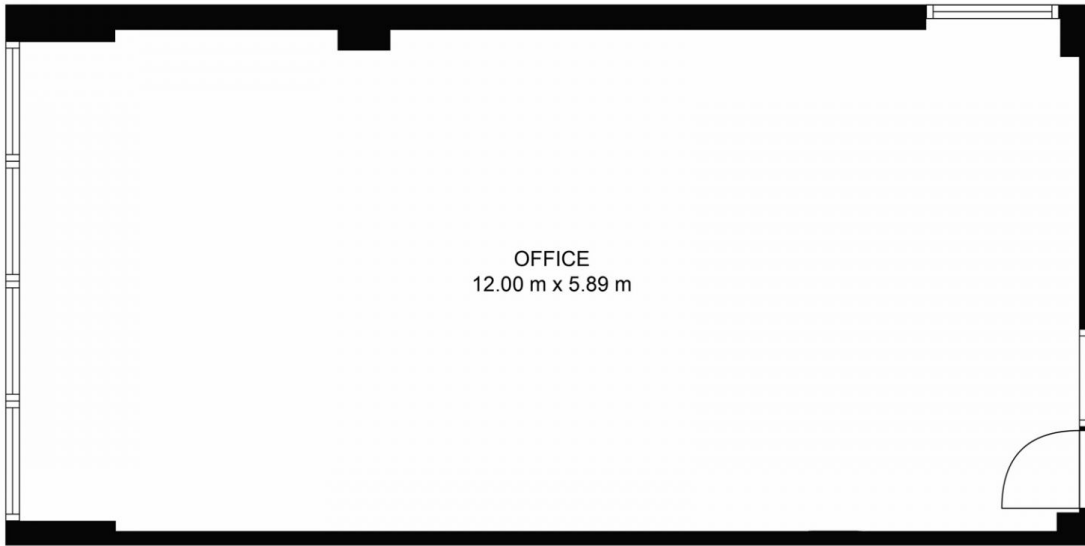
Floor to ceiling windows with excellent natural light and roller blinds this office space features:

- Total floor area: 70m<sup>2</sup> (approx)
- Large open space office
- Communal kitchen and amenities
- Heating and cooling
- Data cabling
- 24 hour access to building with Intercom and security entrance
- Great location
- Lifts and disabled access

**Price** : \$15,000.00 pa  
**Building Size** : 70 sqm  
**View** : <https://www.jmre.com.au/lease/vic/inner-city/north-melbourne/commercial/offices/7717536>



**Molly Bradshaw**  
03 9328 2002



(Not in position)

Total scanned area: 74 m<sup>2</sup>

MEASUREMENTS ARE CALCULATED BY CUBICASA TECHNOLOGY. DEEMED HIGHLY RELIABLE BUT NOT GUARANTEED.