



## 10/70 O'shanassy Street North Melbourne VIC

2 1

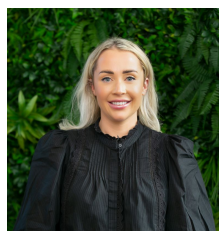
This amazing fully renovated and modernized 2 bedroom apartment is located in a wide tree lined street situated in central North Melbourne.

### Features include:

- Beautifully renovated kitchen with electric appliances
- Large living area with balcony and split system heating and cooling for all year comfort
- Generous double bedrooms with built in robes
- Renovated bathroom with separate bath, shower and vanity

Situated close to vibrant Errol Street, the Royal Children's Hospital, the Royal Melbourne Hospital, North Melbourne Primary school, the Queen Victoria Market and multiple public transport options, an inspection is sure to impress.

**View :** <https://www.jmre.com.au/lease/vic/inner-city/north-melbourne/residential/apartment/7699116>



**Chloe Conway**  
03 9328 2002

10/70 O'SHANASSY STREET, NORTH MELBOURNE



Total scanned area: 66 m<sup>2</sup>

MEASUREMENTS ARE CALCULATED BY CUBICASA TECHNOLOGY. DEEMED HIGHLY RELIABLE BUT NOT GUARANTEED.