



2/98 Munster Terrace North Melbourne VIC

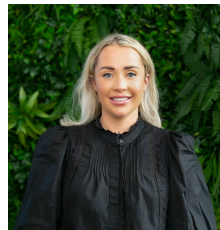
2 1

Come and see a high level of industrial living, this brand new unique and stunning industrial penthouse apartment is sure to impress. Comprising of two bedroom both with built in robes, open plan kitchen, meals and living with ample storage and high end finishes. Stylish bathroom with floor to ceiling tiles and brass tap ware. Outdoors you will find the spacious entertainers delight balcony.

View : <https://www.jmre.com.au/lease/vic/inner-city/north-melbourne/residential/apartment/7691265>

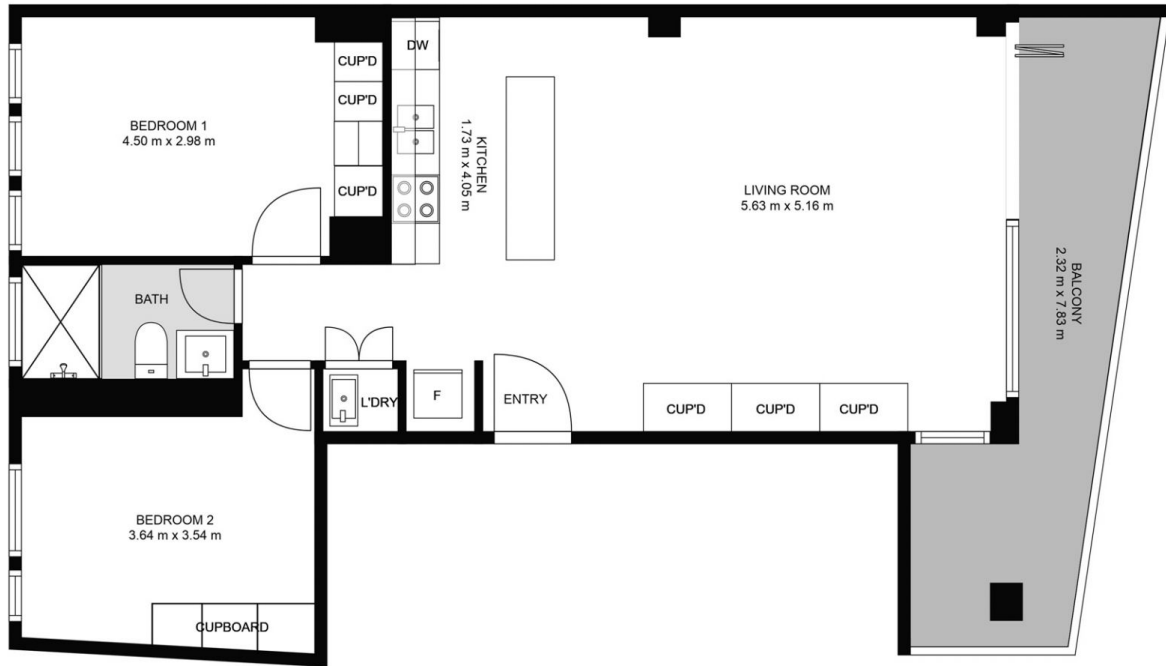
Some additional features include:

- Stainless steel bench tops
- De'longhi appliances
- Polished timber flooring
- Ducted heating and cooling for all year comfort
- Lift access to apartment



Chloe Conway
03 9328 2002

Be sure to inspect, this will not last long?



Total scanned area: 85 m²

MEASUREMENTS ARE CALCULATED BY CUBICASA TECHNOLOGY. DEEMED HIGHLY RELIABLE BUT NOT GUARANTEED.