

**31/30 Chetwynd Street West Melbourne VIC**

2 1 1

Dramatic street scapes and sunsets complement the dynamic design of this generous contemporary apartment, ideally positioned to enjoy North Melbourne's cafes and the complete convenience of city access.

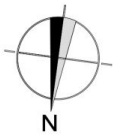
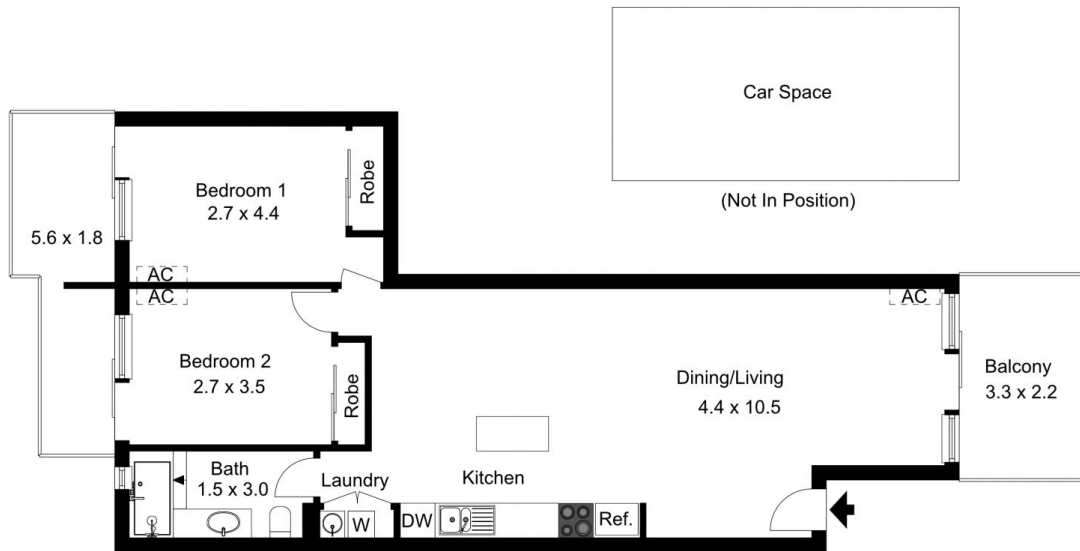
The property comes fully furnished and boasts a large living/dining area opens to inviting balcony with a central kitchen with Bosch and Blanco appliances. It has 2 bedrooms, each opening to a rear balcony and a stylish bathroom featuring granite vanity. Inclusive of heating and a reliable security entrance with a secure underground parking.

Access to shared heated lap pool and gym facilities are also included with the building.

**View :** <https://www.jmre.com.au/lease/vic/inner-city/west-melbourne/residential/apartment/6375293>

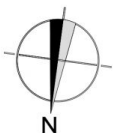


**Mary Sdregas**  
03 9328 2002



The floor plan is not to scale; measurements are indicative and in metres. Exterior elements are not in position. Plans should not be relied on. Interested parties should make and rely on their own enquiries.

Produced by **DIAKRIT**



The floor plan is not to scale; measurements are indicative and in metres. All features included in this 3D plan are for inspiration purposes only. This is not an exact replica of the property or the position of exterior elements. Plans should not be relied on. Interested parties should make and rely on their own enquiries.

Produced by **DIAKRIT**