



8/380 Lygon Street Brunswick East VIC

2 1 1

Be rewarded with plenty of warmth and natural light throughout this open plan, entertainers delight located in a fashionable locale.

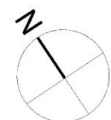
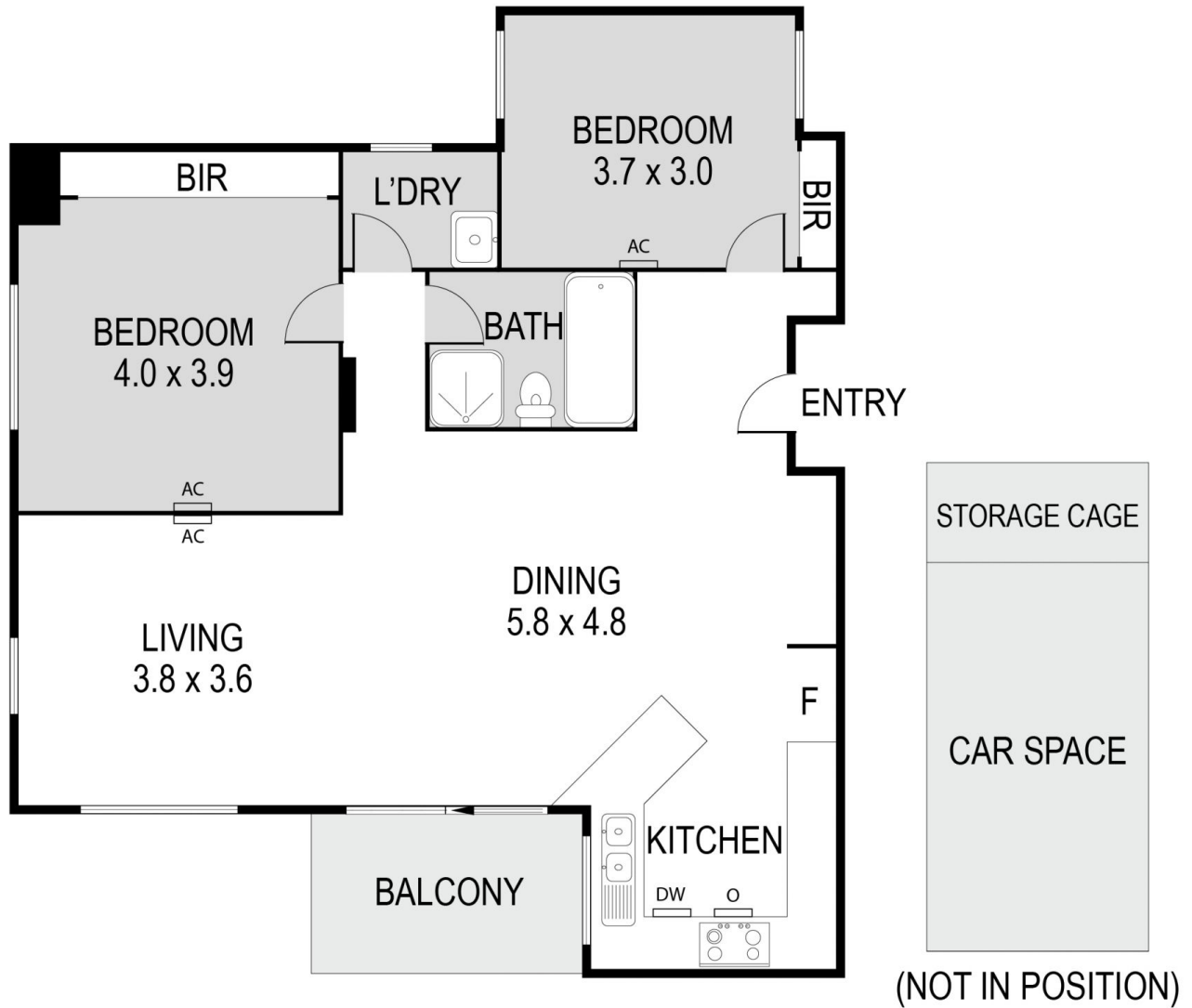
Modern neutral kitchen overlooks the spacious dining/lounge area and sunny terrace. Two double bedrooms fitted with large robes, glowing central bathroom and separate laundry. Secure entry, heating, cooling and storage cage all included within 4km of the CBD.

The apartment ideally located at the heart of Brunswick East, not only the quick access to CBD by tram stop (route 1 and 6) at door stop, but the parks, shops and restaurants at your fingertips that Lygon Street has to offer.

View : <https://www.jmre.com.au/lease/vic/north/brunswick-k-east/residential/apartment/6369762>



Mary Sdregas
03 9328 2002



8/380 Lygon Street, BRUNSWICK EAST

Please note this is a representation only and whilst every precaution is taken to ensure we provide you with accurate information regarding this property, We recommends you obtain your own measurements and/or engage the services of a qualified surveyor should you require exact dimensions. We expressly deny responsibility for any omissions/errors contained herein.