



### 651 Queensberry Street North Melbourne VIC

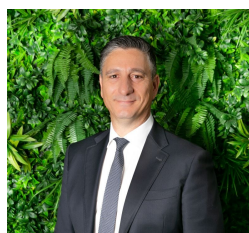
3 1

With its timeless charm and floorplan versatility, this Single fronted Victorian delight delivers an environment of quality and convenience ideally situated in a most sought-after pocket with every city-edge lifestyle advantage at your fingertips.

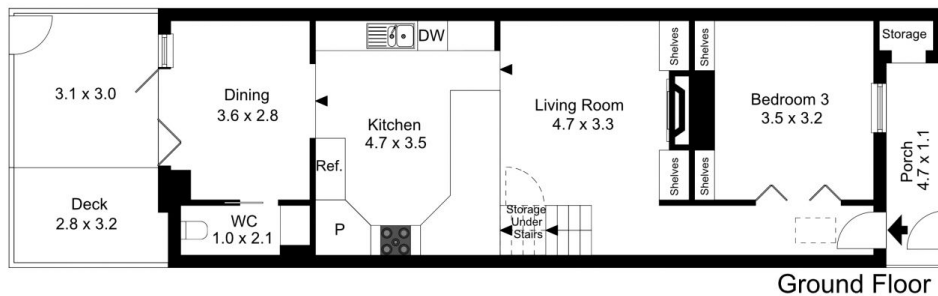
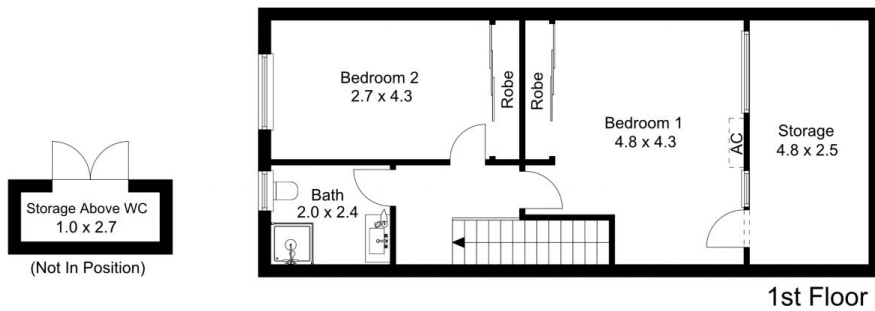
Extended two-level interior boasts 3 large bedrooms (2 with BIRs), a possible home office, deluxe main bathroom, open-plan living/dining area with full-width bi-folds revealing a private courtyard with extendable electric awning and separate powder room. Add to this a stone bench hostess kitchen with the finest appliances, heating and cooling, Spotted Gum floors, ample storage spaces and more, plus euro laundry.

Only a short Stroll to Errol Street Village cafes and shops, North Melbourne Station, close to the CBD and Uni/Hospital precincts, within the University HS catchment area.

**Price** : \$ 1,281,000  
**Land Size** : 94 sqm  
**View** : <https://www.jmre.com.au/sale/vic/inner-city/north-melbourne/residential/house/6192986>

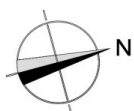
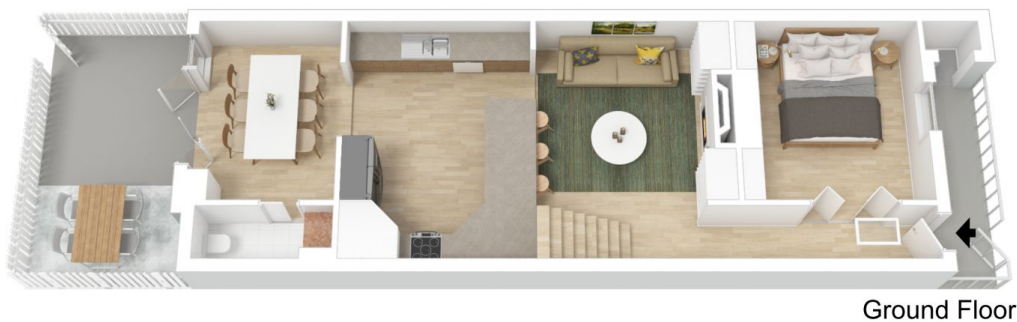


**John Sdregas**  
03 9328 2002



The floor plan is not to scale; measurements are indicative and in metres. Exterior elements are not in position. Plans should not be relied on. Interested parties should make and rely on their own enquiries.

Produced by **DIAKRIT**



The floor plan is not to scale; measurements are indicative and in metres. All features included in this 3D plan are for inspiration purposes only. This is not an exact replica of the property or the position of exterior elements. Plans should not be relied on. Interested parties should make and rely on their own enquiries.

Produced by **DIAKRIT**