

**10 Emma Street Seddon VIC**

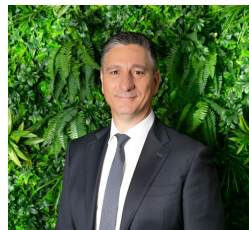
2 1 1

The concept of a contemporary residence that flows seamlessly from indoors to outdoors and delivers the luxury of large proportions is brilliantly, beautifully achieved by this exceptional home. This exquisite modern townhouse feels instantly warm and inviting as you walk through the front door with polished timber floors throughout.

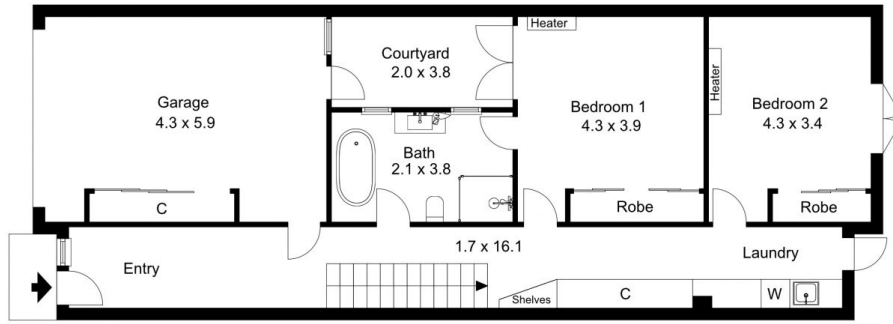
Split over two levels, the ground level comprising of two spacious light filled bedrooms both with built in wardrobes, two way spacious bathroom and private lightwell courtyard, the second bedroom features French doors that lead out onto an entertainers private back yard.

Leading you up to the first level to an expansive open plan living/dining space is complimented by a designer kitchen with Caesar- stone bench tops and stainless steel appliances, flowing out onto a large north facing balcony is sure to see you entertaining family and friends all year

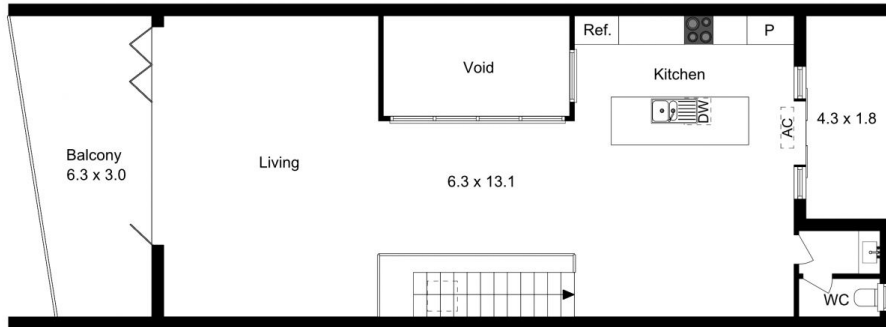
**Price** : \$ 968,000  
**Land Size** : 150 sqm  
**View** : <https://www.jmre.com.au/sale/vic/west/seddon/residential/townhouse/5990571>



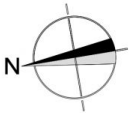
**John Sdregas**  
03 9328 2002



Ground Floor



1st Floor

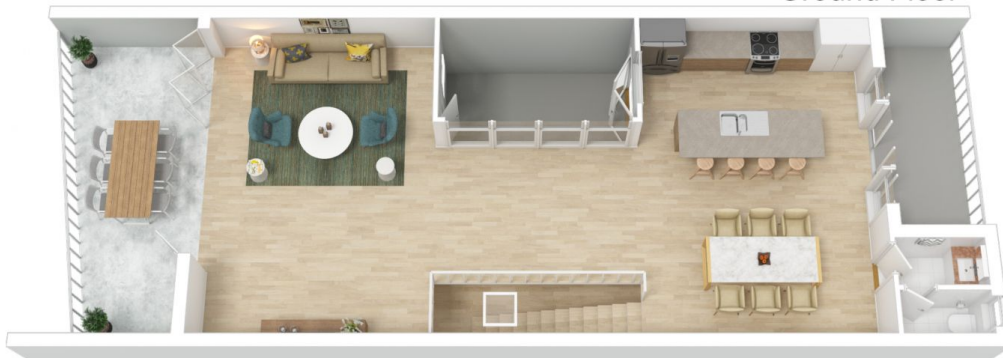


The floor plan is not to scale; measurements are indicative and in metres. Exterior elements are not in position. Plans should not be relied on. Interested parties should make and rely on their own enquiries.

Produced by **DIAKRIT**



Ground Floor



1st Floor



The floor plan is not to scale; measurements are indicative and in metres. All features included in this 3D plan are for inspiration purposes only. This is not an exact replica of the property or the position of exterior elements. Plans should not be relied on. Interested parties should make and rely on their own enquiries.

Produced by **DIAKRIT**