



27/2 Newmarket Way Flemington VIC

2 1 1

Take one step into this well-maintained unit's enormous living/dining room and you can't help but say "Wow!" And that's before you step out into the private courtyard with complete privacy!

An inner-city 2-bedroom unit rarely offers so much unencumbered living space, but this ground-floor Grange Complex apartment does, and in style. Only steps from shops and transport, and 5km from the CBD, this attractively priced unit is an ideal urban lifestyle choice for first home buyers, professional or downsizing couples, and investors.

Features:

? Kitchen features black granite benchtops, breakfast bar, roomy double pantry.

? Quality hotplate, SS Oven and Fisher & Paykel dishdrawer.

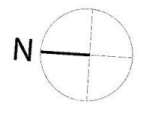
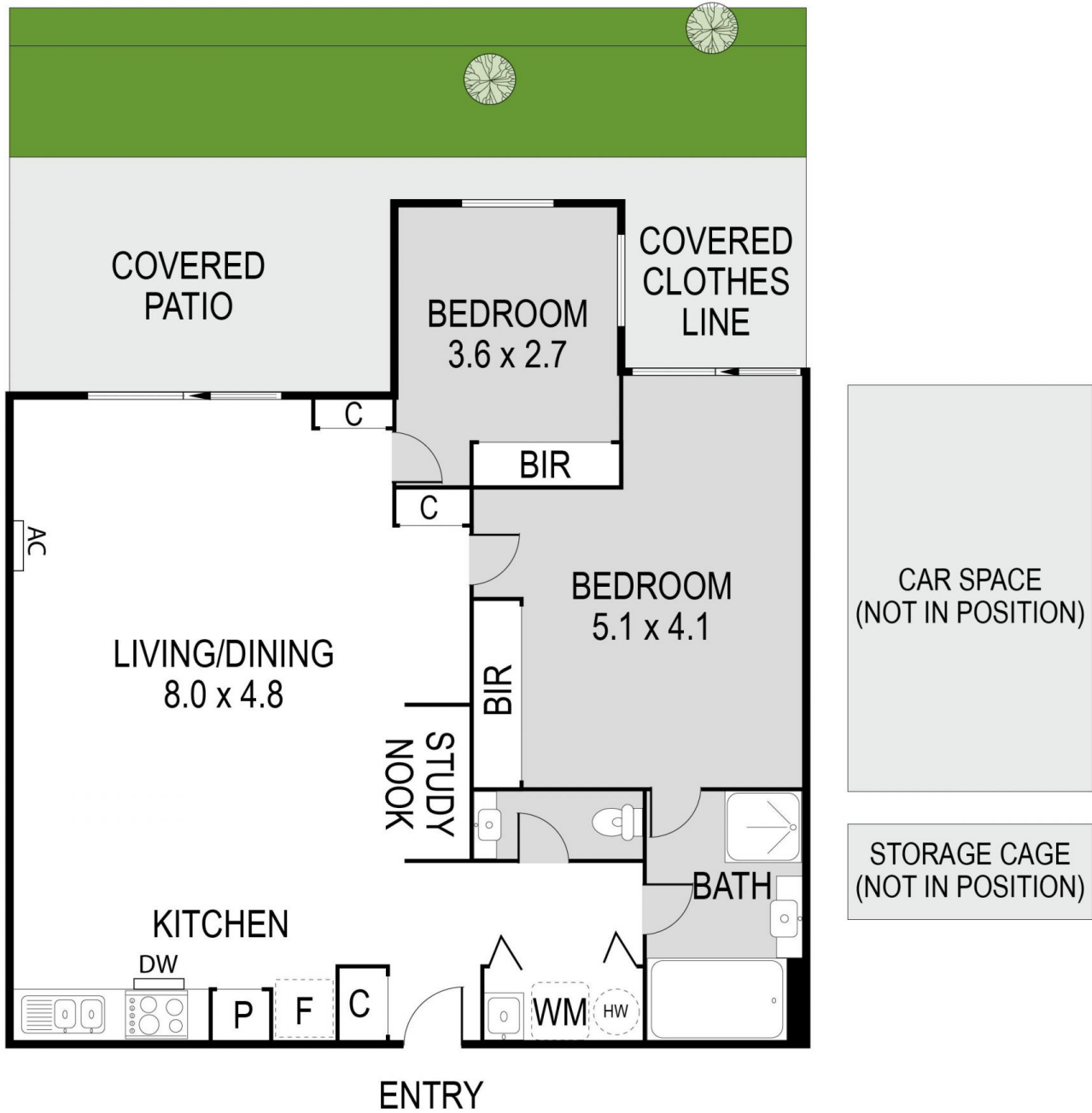
? Huge lounge/dining space flowing out to private

Price : \$ 577,000

View : <https://www.jmre.com.au/sale/vic/north/flemington/residential/apartment/5934434>



John Sdregas
03 9328 2002



27/2 Newmarket Way, FLEMINGTON

Please note this is a representation only and whilst every precaution is taken to ensure we provide you with accurate information regarding this property, We recommends you obtain your own measurements and/or engage the services of a qualified surveyor should you require exact dimensions. We expressly deny responsibility for any omissions/errors contained herein.