



125C Victoria Street Flemington VIC

3 2 1

Combining modern flair with the beauty of a traditional terrace, this home offers inner city sophistication within peaceful parkland surrounds. Featuring lounge room with gas heating, open plan living with spacious kitchen and quality appliances, light filled meals area overlooking a private low maintenance courtyard, 3 spacious bedrooms with BIR, central 2 way bathroom, 2 toilets and laundry. Extra features include under cover parking, freshly painted throughout and balcony leading out from the master bedroom with parkland views. Positioned within minutes of all amenities including the tram, shops and cafes, universities, parkland and a short trip into the CBD, this is the perfect opportunity for an inner city, low maintenance lifestyle.

Call to arrange a private viewing today.

View : <https://www.jmre.com.au/lease/vic/north/flemington/residential/townhouse/5934306>



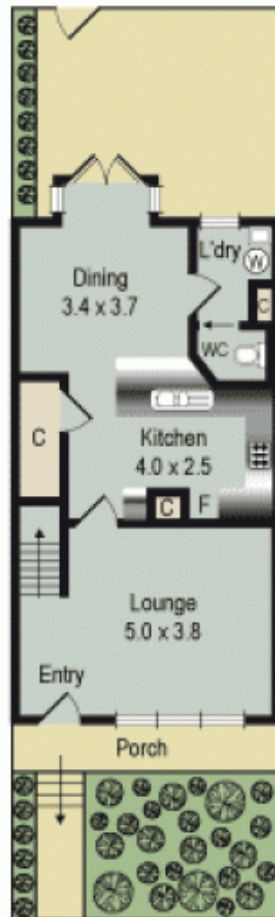
Samantha Brennan
03 9328 2002



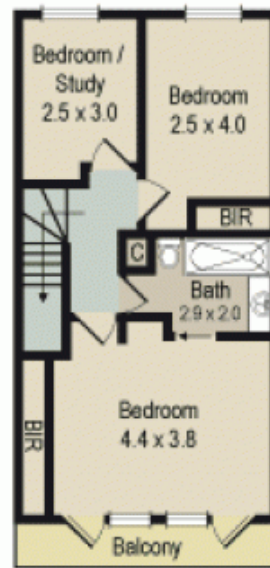
Mary Sdregas
03 9328 2002

125C Victoria Street, Flemington

Note: All measurements are approximate and should be confirmed by potential purchasers



Ground Floor



First Floor